



EROSION PROTECTION APPLICATION



GrassGuard® www.grassguard.biz Grass Reinforcement Mesh

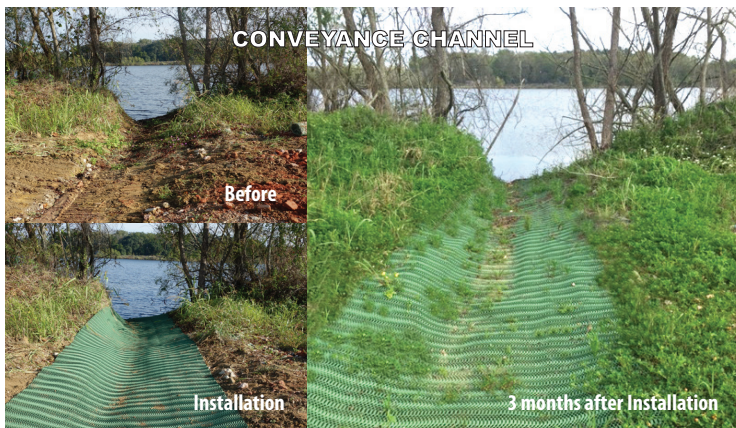
GrassGuard® Erosion Protection

Applying GrassGuard® for erosion protection is an aesthetically appealing and economical way to replace hard armor erosion control structures. GrassGuard® grass reinforcement mesh interlocks with the natural vegetation of the application area reducing sediment loss and improving downstream water quality while fitting naturally into the environment.

GrassGuard® is a flexible, yet tough, long lasting extruded polyethylene mesh. GrassGuard® is designed with an open space structure that allows vegetation and grass to grow uniformly. After installation, the reinforced area will appear as a grassed or natively vegetated surface, reinforcing the soil against erosion. GrassGuard® for erosion protection applications is also the solution for staying **GREEN**. GrassGuard® is the environmentally friendly way to stabilize an erosion prone area while maintaining its natural appearance.

PRODUCT	Thickness (in)	ROLL SIZES AVAILABLE		
Standard Duty (SD) Erosion protection, light traffic areas, walkways, bike paths, handicap access	0.43"	8' x 25'	4' x 25'	Master Roll 8' x 350
		8' x 50'	4' x 50'	

Erosion Protection Categories



- Vegetated Erosion Control
- Stormwater Pipe Outfall
- Conveyance Channel
- Slope Stabilization
- Streambank / Shoreline Reinforcement
- Dam / Levee Overtopping Stabilization
- Detention Pond Emergency Outflow Weir
- Vegetated Shoreline Access

Installation is Easy!

GrassGuard® is easily installed by unrolling and anchoring the rolls in place using sod staples or pins. GrassGuard® can be easily cut on site. After installation, GrassGuard® promotes the growth of a natural vegetated area by interlocking with the surrounding vegetation, this helps prevent erosive water from displacing particles.

Growth of vegetation will typically be between a few weeks or months depending on growing season. Regular mowing may resume once vegetation has established with the GrassGuard® grass reinforcement mesh.



GrassGuard® can be used in conjunction with turf reinforcement mats (TRM) or articulated concrete mattresses to further enhance stabilization and reinforcement. Industrial Fabrics, Inc., has a full engineering staff to help with your design and application needs.

Full installation guidelines are available.

GrassGuard® (225) 273-9600 • 800-848-4500 • 510 O'Neal Lane Ext., Baton Rouge, LA 70819

Customer should verify with the product manufacturer that customer has the most current GrassGuard® specifications for the product ordered or purchased. The GrassGuard® system can be used in the application described in our literature and on our website, provided proper installation and engineering principles are followed. Professional engineering should be consulted before installation of GrassGuard® units to assure appropriate design and use. ALL EXPRESSED OR IMPLIED WARRANTIES, INCLUDING THOSE OF MERCHANTABILITY AND FITNESS FOR A PARTICULAR PURPOSE ARE DISCLAIMED. GrassGuard® is a trademark of Industrial Fabrics, Inc.